



BUILDINGS REFERENCES



Manufacturer:
NESTAAN NV
infonestaan@nhb.be
www.nestaan.be

Limpet TM is a trademark of Thermica Ltd



PERIOD : 2024



PRODUCT : SLV INT



CONTRACTOR : HTA Ltd



FIELD OF EXPERTISE : Tailormade PFP solutions for new redevelopment buildings



ABOUT THIS PROJECT

Description

a new residential construction project “Western Drive Sidcup” in London’s one of posh areas with scope of demolition of existing East Dulwich hotel.

[https://bellfarmconstruction.com/;](https://bellfarmconstruction.com/)

PFP Assignment

Making the structures of this new redevelopment project 100% fireproof.

PFP Challenge

Ensuring to meet high PFP-standard of quality within budget.



PERIOD : 2024



PRODUCT : SLV EXT & SLV INT



CONTRACTOR : DENYS / Architectuuratelier
Ambiorix/BULK Architecten



FIELD OF EXPERTISE : Structural fireproofing of
cultural buildings that have
to be renewed.



ABOUT THIS PROJECT

Description

A modern and functional transformation and optimization of different operations like dance, theatre and performance in one building.

PFP Assignment

Respect in a complex and crowded building 100% the committed hours of fire resistance in case of fire.

PFP Challenge

The ongoing need of flexible, specialized applications expertise and innovative tailor-made PFP-solutions.





PERIOD : 2023-2024



PRODUCT : SLV INT (Internal)



CONTRACTOR : HTA Ltd / ls-estates.co.uk



FIELD OF EXPERTISE : Tailormade PFP solutions for new redevelopment buildings



ABOUT THIS PROJECT

Description

Our “17CC” project involves the refurbishment, extension and repositioning of a former office building into c. 190,000 sq ft of CL2 science workspaces, in the heart of Canary Wharf. The finished building will offer premium workspaces to the science community, with a mix of fully fitted, Cat A and Shell & Core finishes, catering to a range of occupier type and size.

PFP Assignment

Making the structures of this new redevelopment project 100% fireproof.

PFP Challenge

To ensure that older buildings remain compliant and protected for generations to come.

The Metropolis Building at Marylebone

London-UK



©themetropolisbuilding



PERIOD : 2023-2024



PRODUCT : SLV INT (Internal)



CONTRACTOR : SBS Ltd



FIELD OF EXPERTISE : Tailormade PFP solutions for new redevelopment buildings



ABOUT THIS PROJECT

Description

The Metropolis Building, located in Marylebone, London, offers 174,000 sq ft of modern, sustainable office space. The building is recognised by its BREEAM Outstanding certification and its 100% renewable energy operation, achieving a net zero carbon footprint. Designed with occupant well-being in mind, it offers over 20,000 sq ft of amenities, including a gym, coffee shop, event spaces, private terraces on every floor, and a communal rooftop terrace.

<https://themetropolisbuilding.com/>

PFP Assignment

Making the structures of this new redevelopment project 100% fireproof.

PFP Challenge

Respect the highest professional PFP-standards to ensure that the welfare of the residents is maintained and our ministry is a structurally firesafe place.



PERIOD : 2023



PRODUCT : SLV INT (Internal)



CONTRACTOR : HTA Ltd



FIELD OF EXPERTISE : Tailormade PFP solutions for new redevelopment buildings



ABOUT THIS PROJECT

Description

51 Moorgate was an office building redevelopment project. Our application partner turned it into a modern, structurally fireproof, sustainable and healthy workplace where people and businesses can thrive.

PFP Assignment

Making the structures of this new redevelopment project 100% fireproof.

PFP Challenge

To ensure that older buildings remain compliant and protected for generations to come.



PERIOD : 2023



PRODUCT : SLV INT (Internal)



CONTRACTOR : HTA Ltd

FIELD OF EXPERTISE : Tailormade PFP solutions
for new redevelopment
buildings

ABOUT THIS PROJECT

Description

In one of the Europe's most famous retail department stores, MICC has been installed to protect the many visitors each day from the spread of fire, and to protect the famous store itself. A building that was founded in 1849, Harrods can also be classed as national heritage. Harrods is a store that occupies a 5-acre site and has 330 departments covering 1.1 million sq ft (100,000 m²) of retail space. The scheme was completed without affecting the store's operation. The difficulties of working within a Grade II listed building, which is also an icon for London and tourists, was not used at any time as an excuse to avoid striving for the best PFP solutions.

PFP Assignment

Making the structures of this new redevelopment project 100% fireproof.

PFP Challenge

Intensive collaboration with structural engineers and PFP-applicators to ensure that fireproofing upgrades complement the building's original design without compromising safety.



PERIOD : 2023



PRODUCT : SLV INT (Internal)



CONTRACTOR : HTA Ltd



FIELD OF EXPERTISE : Tailormade PFP solutions for new redevelopment buildings



ABOUT THIS PROJECT

Description

Between The Ritz and Fortnum's on the south side of Piccadilly is a row of grand Edwardian stone-fronted edifices. At LASSCO we are currently at work in one of the largest of them, "Egyptian House" built in 1905.

The name "Egyptian House" is a reference to the extraordinary Georgian building named "Egyptian Hall" that stood on the site prior. It was a London landmark – originally known as "The London Museum" and was built in 1811-12 to house and display the collections of the traveller, antiquarian and showman William Bullock (1773 – 1829) Egyptian Hall built 1811, dem 1905.

The building, designed by Peter Frederick Robinson who had worked on Brighton Pavilion – was striking: an Egyptian styled façade with three full-height tapered arcades all supported on columns decorated with hieroglyphs and held-up by a pair of Coade stone statues of Isis and Osiris. “Egyptian House”, designed by William Woodward (1846-1927), was named in memory of the old hall, and went up in its place. Much bigger and more capacious with its Portland Stone façade – smart retail below and offices and apartments above.

<https://www.lassco.co.uk/lassco-news/2023/12/13/get-these-floorboards-down-and-have-an-egyptian-hall/>;

PFP Assignment

Making the structures of this new redevelopment project 100% fireproof.

PFP Challenge

Intensive collaboration with structural engineers and PFP-applicators to ensure that fireproofing upgrades complement the building’s original design without compromising safety.



PERIOD : 2023



PRODUCT : SLV INT (Internal)



CONTRACTOR : HTA Ltd



FIELD OF EXPERTISE : Tailormade PFP solutions for new redevelopment buildings



ABOUT THIS PROJECT

Description

- Passive fire protection works to a building for the MOJ covering over 1000 points over 7 floors. Completed the passive fire protection works to a building for the MOJ covering over 1000 points over 7 floors.
- The works was to take out existing noncompliant materials where required, and as identified by others on the initial fire risk assessment, and replace with a compliant solution.
- Additional works was to suitably stop breaches which were also evident from the report and during the works.
- Works were carried out both during working and none working hours to ensure minimum disruption was caused to the client over the 16 week period, and works on site was managed by our working SMSTS manager who was supported by our FRA contracts manager weekly. H&S audits were also carried out monthly internally and reports were issued direct to the client.

PFP Assignment

Making the structures of this new redevelopment project 100% fireproof.

PFP Challenge

To ensure that older buildings remain compliant and protected for generations to come.



PERIOD : 2023



PRODUCT : SLV INT (Internal)



CONTRACTOR : HTA Ltd

FIELD OF EXPERTISE : Tailormade PFP solutions
for new redevelopment
buildings

ABOUT THIS PROJECT

Description

- **Fire protection at iconic former film studio**

02 October 2023 A shared use office and retail space at the landmark former home of British Pathé is now structurally fireproof as part of a wider restoration and refurbishment project, thereby covering all six tenanted floors of the building.

Located at 142 Wardour Street in London's Soho, Film House was once at the heart of London's 'film row'. By the late 1940s, it's estimated that anything up to 100 film companies occupied the street, including Warner Brothers and 20th Century Fox.

Originally the site of the Faraday Electrical Works, the office building was re-built in 1929 in the Art Deco style. Over its long history, it has served as the headquarters for several iconic British businesses, among them Associated-British Pathé film company and, later on, HMV.

- **Complex project**

“Together with our partner HTA we are delighted Nestaan has played a part in giving this iconic building a new lease of life.”

PFP Assignment

Making the structures of this new redevelopment project 100% fireproof.

PFP Challenge

Intensive collaboration with structural engineers and PFP-applicators to ensure that fireproofing upgrades complement the building’s original design without compromising safety.

High-End-Store on Broadway

Fulham-UK



©GoogleMaps



PERIOD : 2021



PRODUCT : SLV INT (Internal)



CONTRACTOR : SBS Ltd of Brentwood - Essex.



FIELD OF EXPERTISE : Structural fireproofing of new or renewed buildings.



ABOUT THIS PROJECT

Description

Fulham is a vibrant area of south west London with a thriving modern day cultural scene. Broadway Fulham is packed full of independent shops, restaurants and bars. This lovely store was in strong need of a futureproof structural fire protection.

PFP Assignment

This successful but older shop needed to be fully PFP-compliant and -protected for generations to come.

PFP Challenge

Overcoming practical constraints inherent to older store constructions.

“Skyland” Residential Tower

Istanbul- Turkey



PERIOD : 2022



PRODUCT : SLV INT - HTA120 & PINS



CONTRACTOR : PROKONS ENDUSTRIYEL YUZEY KORUMA



FIELD OF EXPERTISE : Focus on building of fireproof high rise buildings



ABOUT THIS PROJECT

Description

Istanbul's unique and modern “Skyland Tower” is located in the middle of the two modern areas of the city, Levent and Maslak, in one of the most developed parts of the European part of Istanbul. Skyland residential tower is one of the most beautiful and tallest towers in Istanbul with 10,000 square meters of green space and garden. The skyland project has residential, office, commercial and five-star hotel units overlooking the Belgrade forest and a very luxurious shopping center in the northern European part of Istanbul in the Sarıyer district in a very luxurious neighborhood with 3 towers with a very beautiful and special design.

PFP Assignment

Prevent the heating of structural members, and the spread of fire and smoke.

PFP Challenge

The ongoing needs of flexible, tailor-made planning, specialized expertise, and innovative solutions in futureproof highrise buildings.





PERIOD : 2021-2022



PRODUCT : SLV INT (Internal)



CONTRACTOR : GBS FIRE PROTECTION LTD



FIELD OF EXPERTISE : tailormade PFP solutions for new redevelopment buildings



ABOUT THIS PROJECT

Description

London Square Bermondsey is a new £220m neighbourhood with homes, flexible workspaces and art studios in a collection of former industrial and modern buildings.

A new redevelopment of the Rich Industrial Estate for new use of 198 homes, 32,000 sq ft of commercial spaces and workspace, 70,000 sq ft of storage facilities, an art gallery and public open space (365 sq m garden amenity space and 589 sq m play space), with 35% carbon reduction

[https://richindustrialestate.com/the-project/;](https://richindustrialestate.com/the-project/)

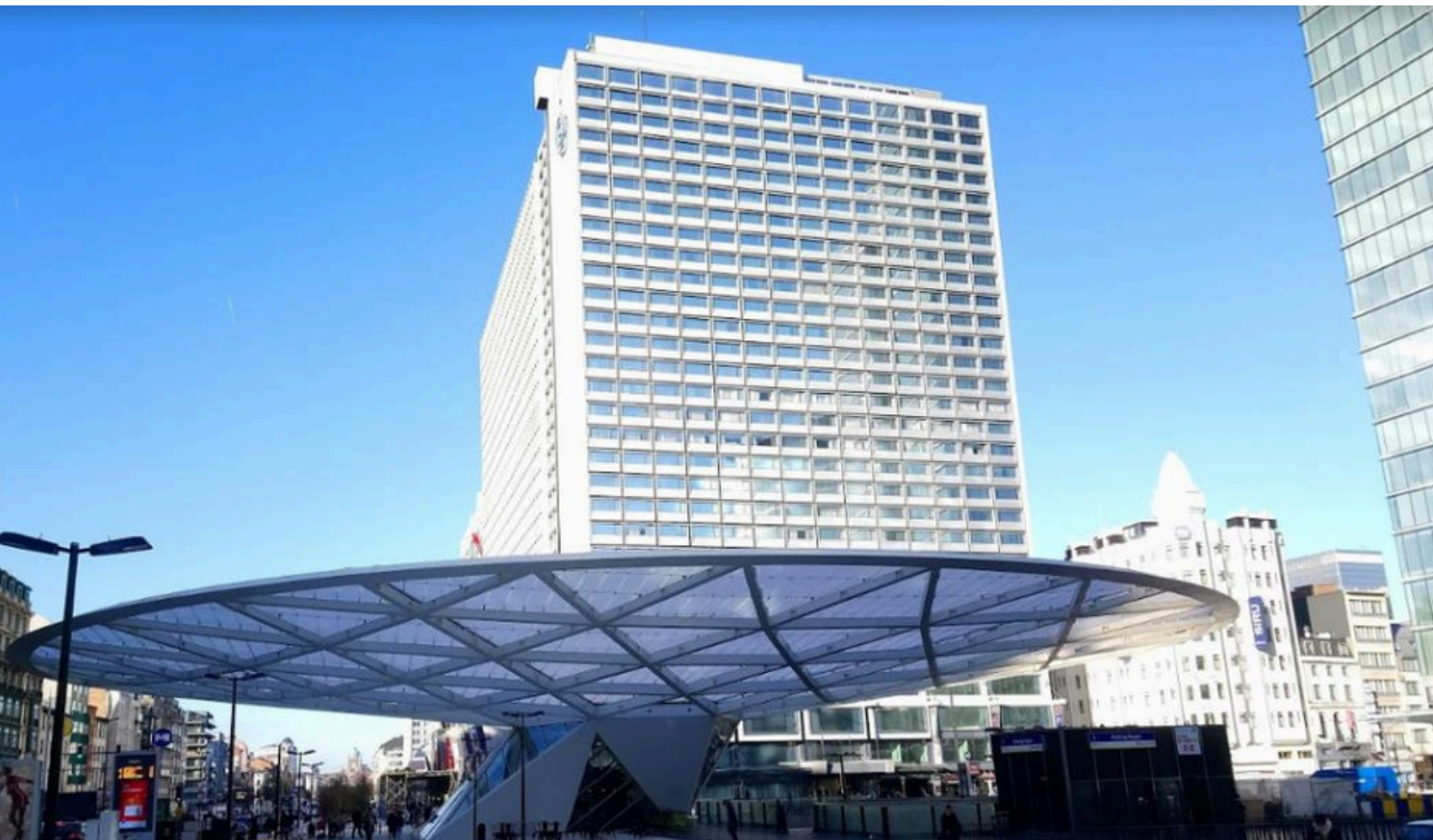
PFP Assignment

Making the structures of the new redevelopment project fireproof: this concerns the residential buildings, the commercial spaces and workspace, the storage facilities and the art gallery.

PFP Challenge

Ensuring a PFP solution that offers a maximal PFP protection and an aesthetical look (seen the switch from an industrial to a residential destiny).





PERIOD : 2020



PRODUCT : SLV INT (Internal)



CONTRACTOR : Ets Louis De Waele



FIELD OF EXPERTISE : PFP on steel in office buildings



ABOUT THIS PROJECT

Assignment

Upgrade of the Passive Fire Protection (PFP) to $R_f=2$ hours of soffits in steeldeck, placed as lost casing under concrete, requiring a site-engineered glued-and-anchored meshing system.

Challenge

The Vlerick Business School, located on the 4th and 5th floor of this building, contains an extension with a mini atrium. Despite this complication we reached a 100% success score. The execution timing had to be brought forward by 6 weeks, at a special demand of the contractor. With our application contractor, we succeeded to deliver top quality in quick tempo.



PERIOD : 2020



PRODUCT : SLV INT (Internal)



CONTRACTOR : Herpain



FIELD OF EXPERTISE : PFP on concrete
@renovation



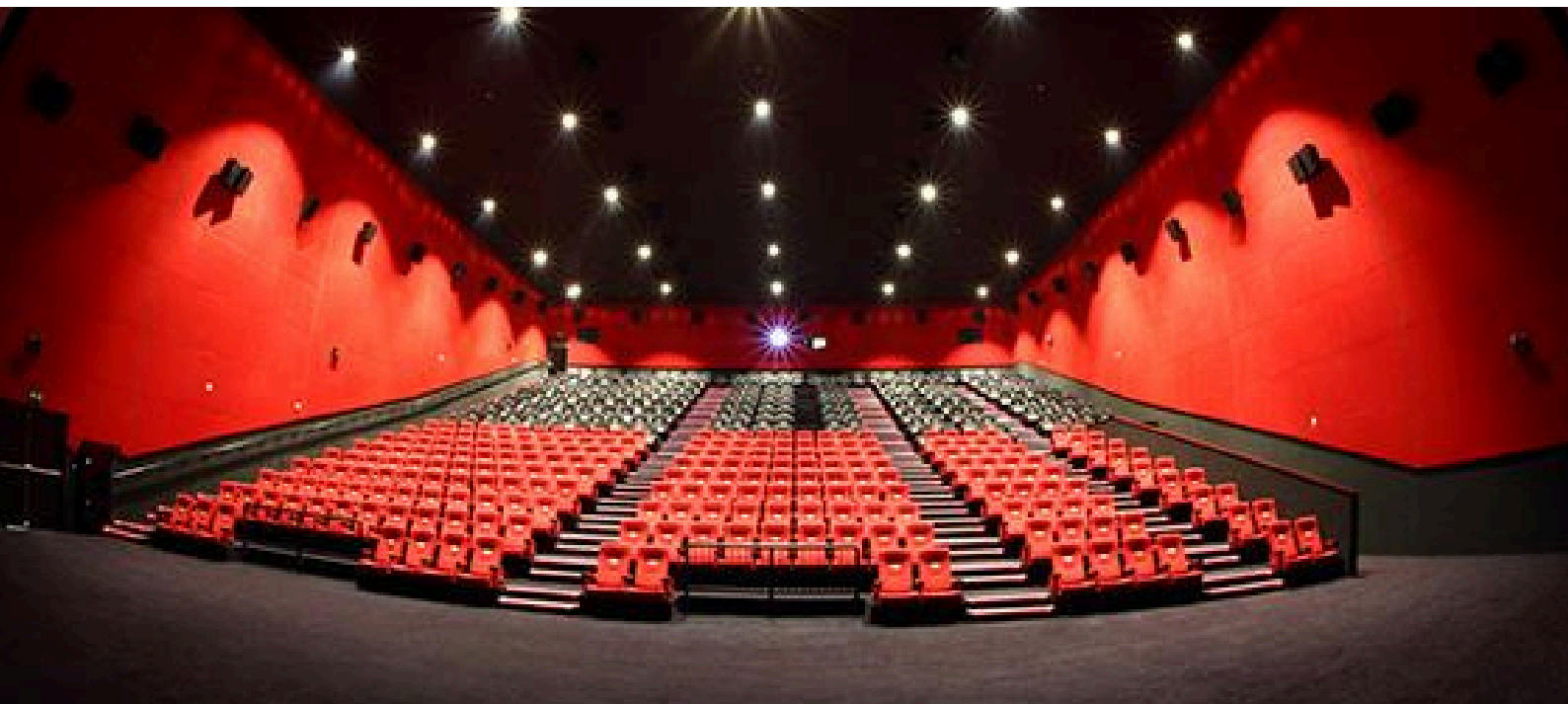
ABOUT THIS PROJECT

Assignment

Upgrade the Passive Fire Protection (PFP) of the infrastructure to $R_f=2$ hours. This renovated building contains a new 4* hotel with restaurant, meeting rooms and administrative premises and a supermarket at groundlevel. <https://herpain.be/en/projects/kam-yuen>

Challenge

The over 100YO building had a design and use of materials from the end 1800's. Steel sizes were from that era so very uncommon, concrete had complicated aggregate and fillers. A robust PFP design with state of the art primer technology and surface treatment ensures the firesafety of the structure for the next century ahead.



PERIOD : 2019



PRODUCT : SLV INT (Internal)



CONTRACTOR : SEC (Sfeir engineering & Construction)



FIELD OF EXPERTISE : PFP



ABOUT THIS PROJECT

Assignment

to ensure a strong PFP-resistance time of more than 2 hours in the cinemas complex of the Burgundy Mall, the first of its type in the area in terms of combined retail, F&B and cinema offerings within a modern well-designed open-air setting.

Challenge

To meet all high requirements of PFP - in perfect conjunction with the high targets of our co-partners in acoustics, isolation and esthetics - of this high tech cinema complex with an advanced architectural level.



PERIOD : 2019



PRODUCT : SLV EXT (External)



CONTRACTOR : Eiffage



FIELD OF EXPERTISE : PFP



ABOUT THIS PROJECT

Assignment

Apply Passive Fire Protection (PFP) to new steel structure at the top floor of a university auditorium with technical installations to $R_f=2$ hours

Challenge

Quite complicated application in very confined space while the complete heating and ventilation units were in place already. Access for equipment and materials only by crane. Despite a very tight application schedule nevertheless a successful application finished in time.



PERIOD : 2019



PRODUCT : SLV EXT (External)



CONTRACTOR : Jacques Delens



FIELD OF EXPERTISE : PFP of office buildings in urban renewal projects



ABOUT THIS PROJECT

Assignment

Upgrade and new applied Passive Fire Protection (PFP) of the infrastructure to 2 hours of this apartment and office building, immediately adjacent to the back gardens of the Royal Palace.

Challenge

Partial renovation, partially new extended project in a very sensitive area of the European Capital. Partial steel structure, partial upgrade of concrete soffits. Application in mid-winter, in a very wet and cold environment, which was the reason for using SLV-External only. Overwin the logistical supply problems, as there are no real parkings for trucks. Pressure of water supply was often not powerful enough for the mortar pumps so water supply needed to be engineered on site.



PERIOD : 2019



PRODUCT : SLV INT (Internal)



CONTRACTOR :



FIELD OF EXPERTISE : PFP on steel



ABOUT THIS PROJECT

Assignment

Apply Passive Fire Protection (PFP) to a new steel structure to $R_f=2$ hours of this worldwide famous EJU-campus complex.

Challenge

The steel was covered by a shiny epoxy coating, which complicated a strong adhesion. A very specifically formulated bonding coat based on SLV of 3 to 4 mm solved this problem.



PERIOD : 2019



PRODUCT : SLV EXT (External)



CONTRACTOR : Hinrich &
Leighton Contractors (Asia) Ltd



FIELD OF EXPERTISE : PFP on steel



ABOUT THIS PROJECT

Assignment

To make this arts complex building completely PFP-proofed for 2 hours.

Challenge

Meet all severe PFP-safety requirements of this huge new cultural centre that houses a multipurpose hall or auditorium of 1.200 seats and a theatre of 550 seats.



PERIOD : 2019



PRODUCT : SLV INT (Internal)



CONTRACTOR : AJ Fire Protection



FIELD OF EXPERTISE : PFP in urban renewal projects



ABOUT THIS PROJECT

Assignment

Make this building completely PFP-proofed for 2 hours, respecting all future proofed safety & durable requirements .

Challenge



PERIOD : 2017



PRODUCT : SLV INT (Internal)



CONTRACTOR : Hinrich



FIELD OF EXPERTISE : PFP



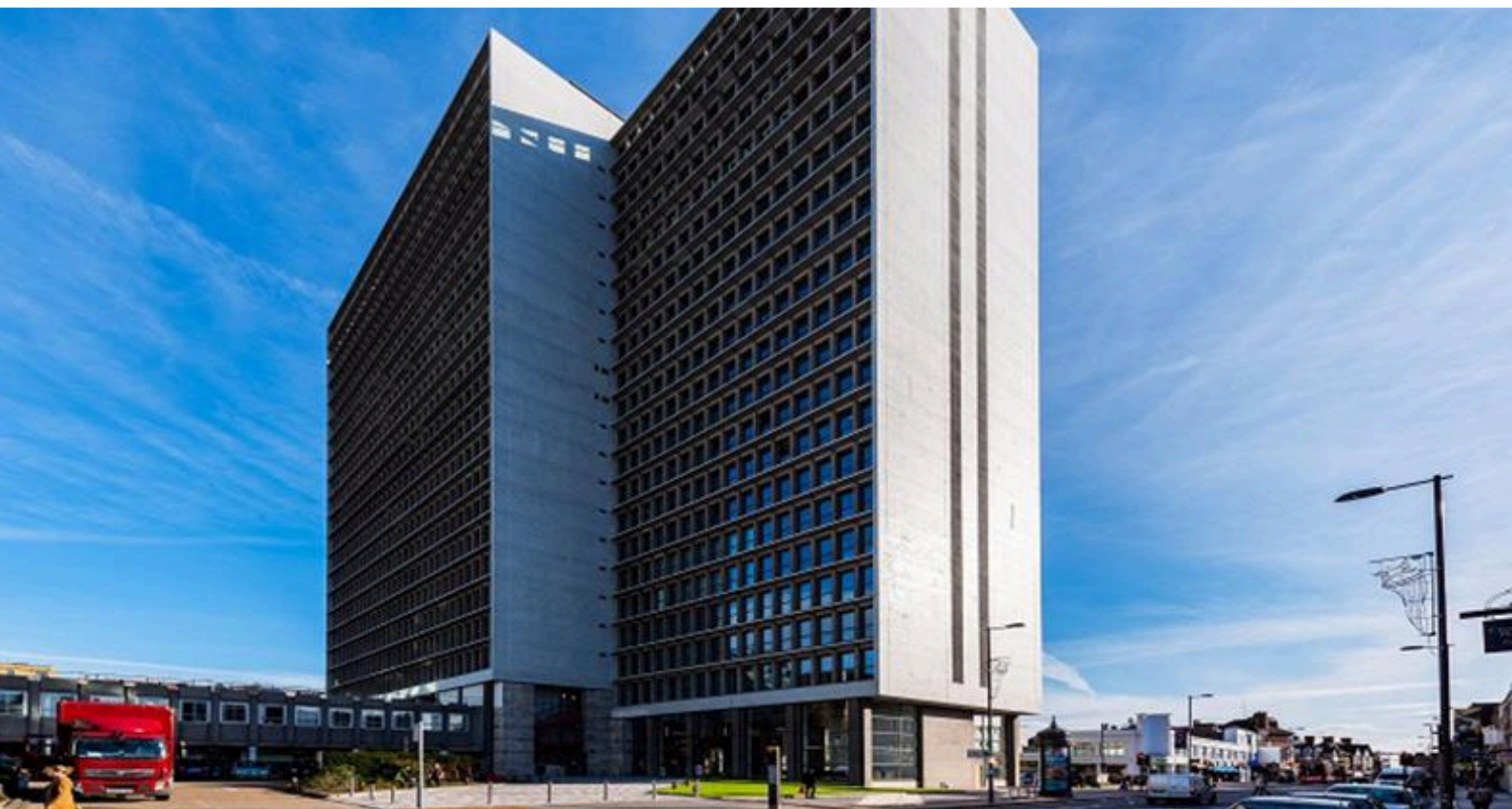
ABOUT THIS PROJECT

Assignment

To make this campus, as hub for research, education and collaboration in Hong Kong, China and Asia, completely PFP-proofed for 2 hours.

Challenge

As this campus is built at Mount Davis, a historically important site built upon a long and rich history of excellence, all high expectations had to be met. It has the ambition to remain worldwide an essential place in connecting people, institutions, business and governments.



PERIOD : 2017



PRODUCT : SLV INT (Internal)



CONTRACTOR : SBS (System Building Services)



FIELD OF EXPERTISE : PFP in urban renewal projects



ABOUT THIS PROJECT

Assignment

PFP-application in a completely renovated building that was converted from a former office tower into an attractive residential high rise building.

Challenge

As the substrate was very irregular, optimal adhesion was hard to get. The soffit consisted of pressed claypots on armed concrete beams . The substrate was primed first with a Limpet Acrylic Primer System, then meshed out with expanded metal lathe, allowing easy spray through and mortar build up to appropriate thickness.



PERIOD : 2017



PRODUCT : SLV INT (Internal)



CONTRACTOR : GBS (Gunite Building Services) Fire



FIELD OF EXPERTISE : PFP of office buildings in urban renewal projects



ABOUT THIS PROJECT

Assignment

Make this building completely PFP-proofed for 2 hours.

Challenge

Respect the tight timing schedule, which we did successfully.



PERIOD : 2017



PRODUCT : SLV INT (Internal)



CONTRACTOR : GBS (Gunite Building Services) Fire Protection Ltd



FIELD OF EXPERTISE : PFP on steel structures



ABOUT THIS PROJECT

Assignment

Renovation and upgrading of an already very old SLV-reference from the Thermica era. The landmark Shopping Mall right in the city center of Hull and adjacent to the trendy Hull Marina area was significantly renovated and needed an upgrade to Rf=2hours.

Challenge

Apply PFP in a mall open to the public and with surrounding shops open every day.
No dust: ok, no fire: ok, no danger: ok, no noise..... well after 16.30 and during weekends...



PERIOD : 2017



PRODUCT : SLV INT (Internal)



CONTRACTOR : GBS (Gunite Building Services) Fire Protection Ltd



FIELD OF EXPERTISE : PFP in urban renewal projects



ABOUT THIS PROJECT

Assignment

Make the renewed shop in a popular shopping street completely PFP-proofed for 2 hours.

Challenge

Overwin the complicated local logistic supply circumstances of the pallets with SLV mortar bags (pedestrian area, very limited supply time slots by day) and respect the very ambitious short closing time of the shop for this important renovation.



PERIOD : 2017



PRODUCT : SLV INT (Internal)



CONTRACTOR : GBS (Gunite Building Services) Fire Protection Ltd



FIELD OF EXPERTISE : PFP in urban renewal projects



ABOUT THIS PROJECT

Assignment

Make this building completely PFP-proofed for 2 hours

Challenge

Become one of the “Best practices” of The Shires, a famous area in London that is in full transformation and renewing, with focus – among others – on PFP.



PERIOD : 2017



PRODUCT : SLV INT (Internal)



CONTRACTOR : GBS (Gunite Building Services) Fire Protection Ltd



FIELD OF EXPERTISE : PFP in urban renewal projects



ABOUT THIS PROJECT

Assignment

Make this building of residential living units completely PFP-proofed for 2 hours (instead of 1 hour before).

Challenge

Become one of the “Best practices” of refurbishment in London, with respect for the traditional architecture, but also for all modern energy and safety requirements, like PFP.



PERIOD : 2016



PRODUCT : SLV INT (Internal)



CONTRACTOR : GBS (Gunite Building Services) Fire Protection Ltd



FIELD OF EXPERTISE : PFP in urban renewal projects



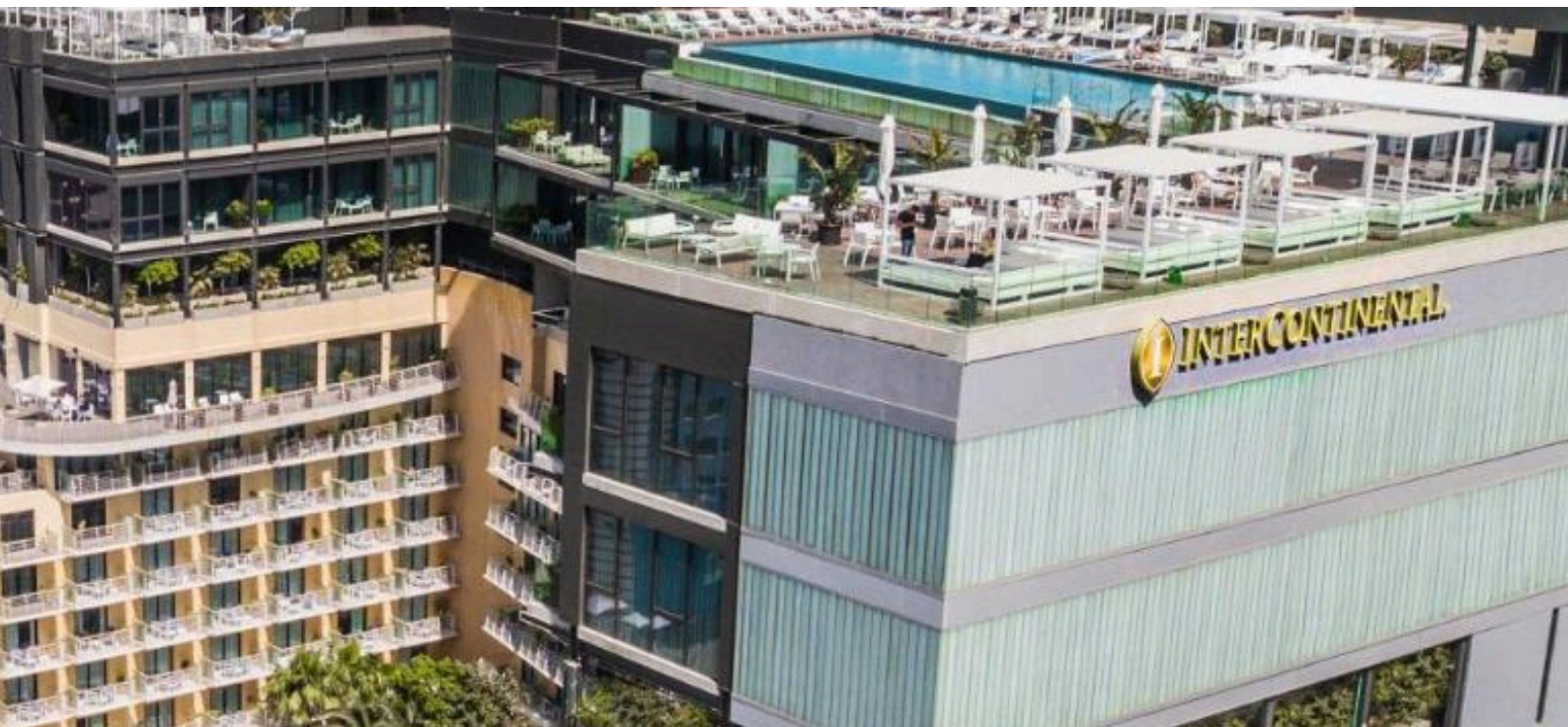
ABOUT THIS PROJECT

Assignment

Upgrade this building in a very high-end residential neighborhood completely PFP-proofed from 1h to $R_f=2$ hours. In this project mainly on concrete, but also on steel.

Challenge

Complicated logistics, while the access with pallet supply was not easy at all. After a thorough site-inspection, we observed a troublesome problem of water-ingress. Thanks to our expertise we could work out a site-engineered solution, respecting building standards for both waterproofing and fire protection.



PERIOD : 2015



PRODUCT : SLV INT (Internal)



CONTRACTOR : RJM Construction Services Ltd



FIELD OF EXPERTISE : PFP in hotels & resorts



ABOUT THIS PROJECT

Assignment

Apply a state-of-the-art PFP system to $R_f=2$ hours in this new hotel project. The giant pool on the rooftop made the hotel very unique in Malta.

Challenge

Application took place in June/July, which means in warm and dry weather conditions. As temperatures of 40°C in the sun are a serious risk to affect a good setting of the cement binder, spraying hours were planned at the cooler moments. The steel structure, carrying the heavy swimmingpool above the top floor, was also an interesting challenge to fireproof.



PERIOD : 2015



PRODUCT : SLV EXT (External)



CONTRACTOR : Proco Ltd



FIELD OF EXPERTISE : PFP on steel



ABOUT THIS PROJECT

Assignment

Make all non-visible parts of the airport completely PFP-proofed for 2 hours.

Challenge



PERIOD : 2015



PRODUCT : SLV INT (Internal)



CONTRACTOR : GBS (Gunite Building Services) Fire Protection Ltd



FIELD OF EXPERTISE : PFP in urban renewal projects



ABOUT THIS PROJECT

Assignment

Make this store completely PFP-proofed for 2 hours.

Challenge

Respect the tight timing schedule, which we did successfully.



PERIOD : 2014



PRODUCT : SLV INT (Internal)



CONTRACTOR : SBS (System Building Services)



FIELD OF EXPERTISE : PFP in urban renewal projects



ABOUT THIS PROJECT

Assignment

PFP optimisation of a completely renovated building.

Challenge

Respect the tight timing schedule, which we did successfully.



PERIOD : 2013



PRODUCT : SLV INT (Internal) & EXT



CONTRACTOR : Fire & Flooring Systems



FIELD OF EXPERTISE : PFP



ABOUT THIS PROJECT

Assignment

Make the renewed campus building of UCD (University College Dublin) completely PFP- proofed for 2 hours.

Challenge

Respect the tight timing schedule, which we did successfully.



PERIOD : 2013



PRODUCT : SLV INT (Internal)



CONTRACTOR : Flameguard



FIELD OF EXPERTISE : PFP, Respect the tight timing



ABOUT THIS PROJECT

Assignment

Make the renewed IKEA-store completely PFP-proofed for 2 hours.

Challenge

We had to realize it in a very short time, because IKEA wanted to reopen the renewed shop asap. The application had to be conform to the strict guidelines of the IKEA Internal Building Prescriptions.



PERIOD : 2013



PRODUCT : SLV INT (Internal)



CONTRACTOR : MTCC



FIELD OF EXPERTISE : PFP on steel



ABOUT THIS PROJECT

Assignment

Make a huge open covering roof, under which the airplanes were stationed during maintenance, completely PFP-proofed for 2 hours.

Challenge

We had the choice of using SLV EXT and SLV INT. At first sight SLV EXT was obvious, but we proved that SLV INT would be the best choice in this particular case:

We demonstrated the adhesion of SLV INT on steel was largely sufficient, and the lower weight of SLV INT was a huge advantage for this open covering canopy structure.



PERIOD : 2010



PRODUCT : SLV INT (Internal)



CONTRACTOR : MTCC



FIELD OF EXPERTISE : PFP in hotel & resorts



ABOUT THIS PROJECT

Assignment Make the structure covering the new three towers hotel that overlooks the bay completely PFP-proofed for 2 hours.

Challenge

The hotel offers a taste of the high life with views of Singapore from above. This large wooden decked area is on top of the iconic Marina Bay Sands hotel, at the edge of the city's harbour. Sitting on top of the massive structure, SkyPark offers a 360-degree panorama, with nothing but a sheet of glass and a few wires between you and the dramatic view.



PERIOD : 2010



PRODUCT : SLV INT (Internal)



CONTRACTOR : Metel



FIELD OF EXPERTISE : PFP in hotel & resorts



ABOUT THIS PROJECT

Assignment

Make the new giant hotel completely PFP-proofed for 2 hours

Challenge

