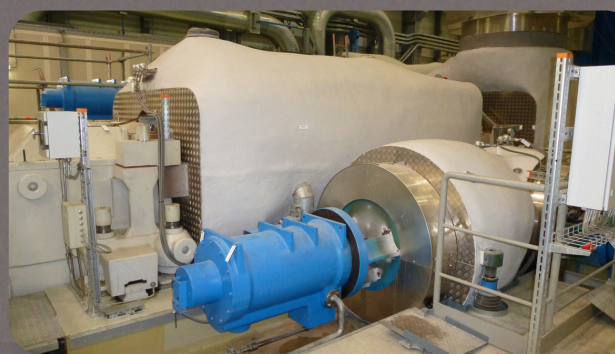


LIMPET BD6

Impact-resistant cement finish



If a protective, durable coating is required, LIMPET BD6, a factory premixed, cement-based, self-hardening finishing coat, can be used on calcium silicate and all types of mineral wool-based thermal insulation.

Treatment

- ✓ Supplied as a dry powder and can be easily mixed with clean water on site.
- ✓ Provides an **extremely durable finish** that is also suitable for decorative paint-based coatings.
- ✓ Can be applied by hand or using **spraying machines**.

Field of application

- ✓ Can be used for **indoor, outdoor and marine applications**.
- ✓ It is **not waterproof** or damp-proof, and for exterior applications must be covered with a waterproofing layer.
- ✓ **Crusting product**.

Fire behaviour

Weight/volume

Thickness

Thermal conductivity

Application limits

Colour

Finish

Non-combustible, A1

1200 kg/m³

3 to 12 mm

0,2 W/m.K

175°C

Greyish

Smooth - Asbestos-free

Head office : Leuzestraat 101, BE - 8510 Kortrijk

+32 (0)69 77 83 20 infonestaan@nhb.be

www.nestaan.be

Z.I. Tournai Ouest II, Rue du Bois des Hospices 2, BE- 7522 Blandain